



*Victory*  
Leisure Homes

# Welcome to **Victory Leisure Homes**

Our 2016 model range has been designed with you in mind; fantastic selection together with value for money equals a great combination. This year we have 17 models to choose from across 6 ranges. All models come complete with uPVC double glazing and central heating as standard equipment, together with a comprehensive list of other features.

Over the past year our design and development team have been working tirelessly in an effort to launch a range of leisure homes that we can be proud of, we hope that you will be equally proud to own one.

For more information please visit our website [www.victoryleisurehomes.co.uk](http://www.victoryleisurehomes.co.uk)

With Victory Leisure Homes we know you will find what you are looking for.

Peter T. Nevitt  
Managing Director









# Groewood

## Groewood stylish and innovative.

The Groewood is a distinctive, exclusive leisure home that displays luxury with every feature. Our renowned attention to design detail marks this leisure home out as the last word in comfortable, practical leisure living. Available in 3 layouts, with 2 bedroom and 3 bedroom options.

Now with uPVC double glazing and central heating as standard specifications, the Groewood is the ideal get-away for well-deserved breaks and longer holidays.



33' x 12"  
2 Bedroom



38' x 12"  
2 Bedroom



39' x 12"  
3 Bedroom

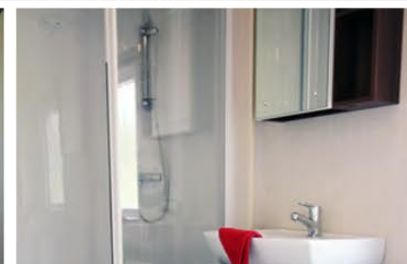
## Main Features

- uPVC double glazing with coloured frames
- Combi boiler central heating
- Integrated microwave
- Insulated 50mm external walls
- Insulated floor with insulation to all exposed water pipes
- Externally vented cooker hood with light
- Coffee table
- Close-coupled ceramic toilets with dual flush
- Vaulted ceilings throughout
- Steel pantile peaked insulated roof
- Voile curtains to most windows
- Domestic gutters with rainwater fall pipes

- Galvanised corner steadies & towbar with front and rear use
- Colour co-ordinated lounge scatter cushions
- TV point to master bedroom
- LED lamps to most light fittings
- Integrated fridge/freezer

## Popular optional extras

- Environmental exterior with colour co-ordinated uPVC windows & doors
- Pre-galvanised chassis
- Fully Galvanised Fusion chassis
- Choice of external claddings in various colours



# Dimensions Leisure Homes

## Coaster (EN1647)

Model	L1	L2	L3	L4	W1	W2	H1&2
35/2	12.06m	11.37m	11.16m	10.94m	4.05m	3.71m	3.47m
	39'7"	37'4"	36'8"	35'11"	13'3"	12'2"	11'4"
37/3	12.69m	12.00m	11.79m	11.57m	4.05m	3.71m	3.47m
	41'8"	39'4"	38'8"	37'11"	13'3"	12'2"	11'4"

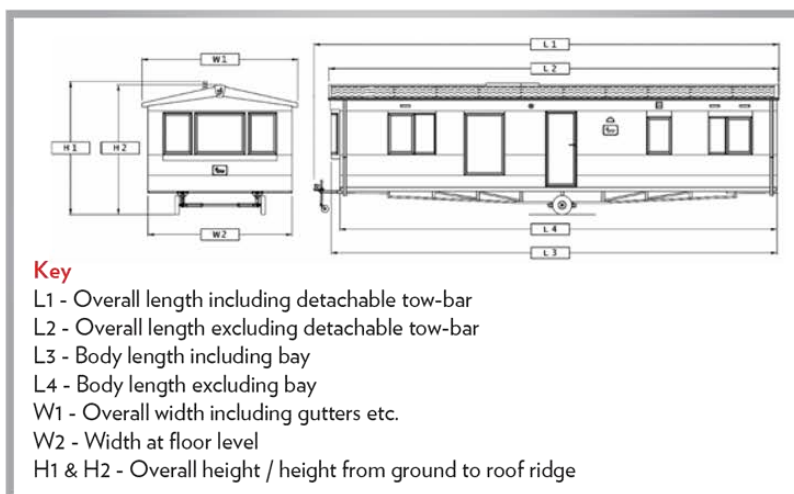
## Torino Super (EN1647)

Model	L1	L2	L3	L4	W1	W2	H1&2
28/2	9.95m	9.09m	n/a	8.83m	4.05m	3.71m	3.47m
	32'8"	29'10"	n/a	28'11"	13'3"	12'2"	11'4"
32/2	11.15m	10.29m	n/a	10.03m	4.05m	3.71m	3.47m
	36'7"	33'9"	n/a	32'11"	13'3"	12'2"	11'4"
35/2	12.06m	11.20m	n/a	10.94m	4.05m	3.71m	3.47m
	39'7"	36'9"	n/a	35'11"	13'3"	12'2"	11'4"
35/3	12.06m	11.20m	n/a	10.94m	4.05m	3.71m	3.47m
	39'7"	36'9"	n/a	35'11"	13'3"	12'2"	11'4"
38/3	12.89m	12.03m	n/a	11.77m	4.05m	3.71m	3.47m
	42'3"	39'6"	n/a	38'7"	13'3"	12'2"	11'4"

## Sandhurst (EN1647)

Model	L1	L2	L3	L4	W1	W2	H1&2
33/2	11.45m	10.76m	10.55m	10.33m	4.05m	3.71m	3.47m
	37'7"	35'4"	34'7"	33'11"	13'3"	12'2"	11'4"
36/2	12.25m	11.56m	11.35m	11.13m	4.05m	3.71m	3.47m
	40'2"	38'0"	37'3"	36'6"	13'3"	12'2"	11'4"
38/2	12.99m	12.30m	12.09m	11.87m	4.05m	3.71m	3.47m
	42'7"	40'4"	39'8"	38'11"	13'3"	12'2"	11'4"
39/3	13.29m	12.60m	12.39m	12.17m	4.05m	3.71m	3.47m
	43'7"	41'4"	40'8"	39'11"	13'3"	12'2"	11'4"

All dimensions are shown in metres (m) and imperial (feet / inches). All measurements are approximate and rounded to the next mm or inch. They could vary slightly due to the nature of the materials used, although the variance should not be significant. Please note that the floorplans are indicative of the general layout only. They are not totally to scale and do not represent fully the shape and style of furniture and fittings or the detail of content.



## Grovetree (EN1647)

Model	L1	L2	L3	L4	W1	W2	H1&2
33/2	11.45m	10.59m	n/a	10.33m	4.05m	3.71m	3.47m
	37'7"	34'9"	n/a	33'11"	13'3"	12'2"	11'4"
38/2	12.99m	12.13m	n/a	11.87m	4.05m	3.71m	3.47m
	42'7"	39'10"	n/a	38'11"	13'3"	12'2"	11'4"
39/3	13.29m	12.43m	n/a	12.17m	4.05m	3.71m	3.47m
	43'7"	40'9"	n/a	39'11"	13'3"	12'2"	11'4"

## Capri (EN1647)

Model	L1	L2	L3	L4	W1	W2	H1&2
38/2	12.99m	12.30m	12.09m	11.87m	4.24m	3.86m	3.49m
	42'7"	40'4"	39'8"	38'11"	13'11"	12'8"	11'5"
39/3	13.29m	12.60m	12.39m	12.17m	4.24m	3.86m	3.49m
	43'7"	41'4"	40'8"	39'11"	13'11"	12'8"	11'5"

## Strathmore (BS3632)

Model	L1	L2	L3	L4	W1	W2	H1&2
40/2	13.65m	12.99m	12.76m	12.54m	4.31m	3.90m	3.68m
	44'9"	42'7"	41'10"	41'2"	14'2"	12'10"	12'1"
40/3	13.66m	12.99m	12.76m	12.54m	4.31m	3.90m	3.68m
	44'10"	42'7"	41'10"	41'2"	14'2"	12'10"	12'1"

**Victory**  
Leisure Homes

Victory Leisure Homes Ltd  
 Broad Lane  
 Gilberdyke  
 East Yorkshire  
 HU15 2TS  
 United Kingdom

+44 (0) 1430 471 200  
 sales@victoryleisurehomes.co.uk

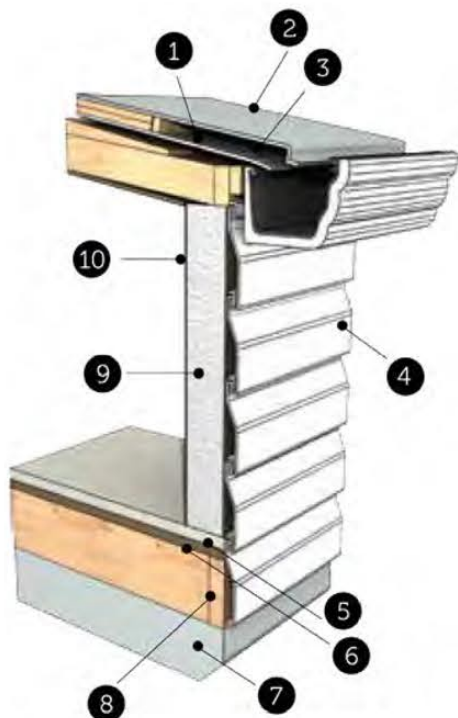
www.victoryleisurehomes.co.uk





### EN1647 Construction Diagram

For the BS3632 diagram, please see the Lodge Brochure.



1. Reflective foil bubble insulation (U-foil)
2. Coated steel pantile roof sheet
3. 25mm average air space
4. Exterior cladding (vinyl shown)
5. 18mm V313 floor
6. 10mm insulation board
7. Chassis
8. Timber joist
9. 45mm fibreglass (if central heated) insulation
9. 29mm polystyrene (no central heating) insulation
10. 50mm (min) Wall section

The combination of solid construction and evolutionary design integrated with comfort and function, demonstrates the depth of knowledge and long experience that the management and staff of Victory Leisure Homes have gained over many years working within the leisure home industry.

This underpinning gives us the confidence to offer a two year warranty to all purchasers within the UK subject to certain terms and conditions. The warranty can be viewed and downloaded on the website [www.victoryleisurehomes.co.uk](http://www.victoryleisurehomes.co.uk) or by sending a stamped addressed envelope to the address shown on this page. For purchasers outside of the UK, please refer to your supplier for warranty details. The warranty available is additional to and does not affect your statutory rights under consumer legislation.

## Important Information

In order for any Victory leisure home to be used, it needs to be correctly sited, have steps or other means of entry and be connected to services (an appropriate propane gas supply, mains electricity to suit the required wattage off-take, mains water at a pressure to suit the appliances and a waste water/sewage outlet).

Most models can be powered by mains electricity only, although some layout changes will be necessary. Victory recommends that you do not use the product for residential occupancy. All Victory leisure homes are built to comply with many European & British Standards and all relevant Codes of Practice required by the National Caravan Council Certification Scheme and those endorsed by The British Holiday and Home Parks Association. These include the recommendation that caravan holiday homes should only be used for temporary holiday occupancy.

The sizes given are reasonably accurate shell measurements, but if your chosen pitch has size limitations or obstructions, you should consult with your Park Operator or Dealer to establish specific sizes.

Illustrations, photographs, descriptions, information and statements contained in any Victory Leisure Homes Ltd. literature are intended only as a general guide. They are relevant to the product at the time of writing and production. Victory Leisure homes Ltd. reserves the right to change any materials, fittings, sizes etc. at any time and without prior notice as supply, product development or legislation conditions demand. The matching and lining-up of patterns on

wall-boards and fabrics is not always possible because of the caravan design and methods of construction.

Some of the items photographed (some refrigerators, fridge/freezers, microwaves, televisions, DVD/video players, Hi-Fi units, some soft furnishings for beds and general props) are for illustration purposes only. Please refer to your Park or Dealer if you need clarification.

All Victory leisure homes are built to meet the requirements of EN1647 for snow loading categories A & B provided that the caravan is sited as recommended in the relevant Code of Practice for siting.

Please note: The description given for some features is not always applicable to every model within any range as there may be legal, technical or layout requirements that may create the need to alter or leave out the stated feature. Also, any item pictured may be different in size or style in other models within the range. Please be aware that supplied appliances and fittings may vary from those described as manufacturers may change, update or make obsolete and introduce new models. Such changes are beyond our control and we draw your attention to the fact that we reserve the right to change as these supply implications take effect. If any feature is critical to your purchasing decision, it would be wise to check beforehand exactly what is supplied with your chosen model.



*Victory*  
Leisure Homes

Victory Leisure Homes Ltd | Broad Lane | Gilberdyke | East Yorkshire | HU15 2TS  
01430 471 200 | [www.victoryleisurehomes.co.uk](http://www.victoryleisurehomes.co.uk) | [sales@victoryleisurehomes.co.uk](mailto:sales@victoryleisurehomes.co.uk)



Victory Leisure Homes



@VictoryLeisure



VictoryLeisureHomes



Victory Leisure Homes